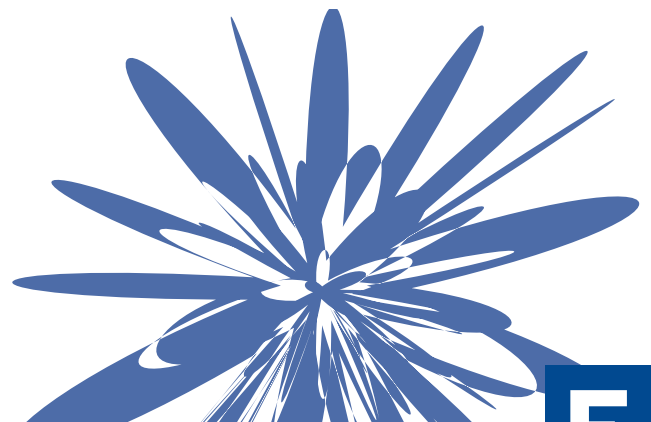
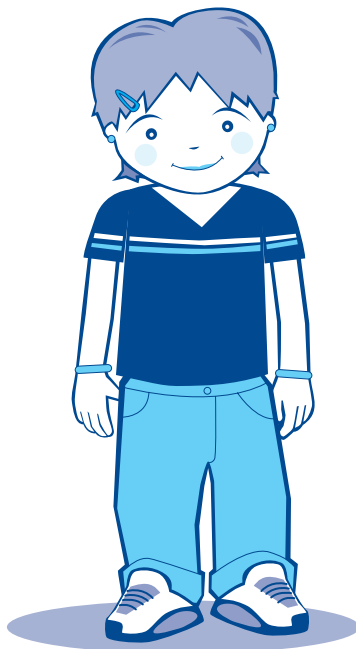


# Glossary

Here are some of the words used in the worksheets with their meanings. There are also some other words your teacher might use when talking about road safety.

	Level E
Consequences	The results or effects of an individual's actions.
Peer pressure	When an individual's decision-making is influenced by their friends or peers. A child may be pressured, persuaded or coaxed into saying or doing something through peer pressure.
Personal assertiveness	When an individual's decision-making is not influenced by anyone else. The individual will not be frightened to say or do what he/she thinks.
Speed limit	The maximum speed at which a vehicle may travel on a road.



**consequences**

**peer pressure**

**personal  
assertiveness**

**30**

**speed limit**