



## Teachers' Notes

Curricular links to Health Education 5-14 National Guidelines and RSE Guidelines

### Attainment outcome: Taking responsibility for health

#### LEVEL C

STRAND	ATTAINMENT TARGET	RSE GUIDELINES
<b>Social health</b> This strand explores the interaction of the individual, the community and the environment in relation to health and safety.	Demonstrate safe ways of responding to risks to health and personal safety on their community e.g. following codes of safety.	Responsible roadside behaviour.

### Teaching Background Information

- ➔ Pavements are for pedestrians to walk on. Playing on a pavement or in a street can be dangerous.
- ➔ We can stay safe by behaving sensibly on the pavement or in the street.
- ➔ Some places are safer to play in than others e.g. park, garden. They are safer because they are away from traffic.
- ➔ In rural areas, there may not be pavements on the roads. It is safer for pupils to walk on the right-hand side of the road facing oncoming traffic.

### Useful Websites

[www.hedgehogs.gov.uk/arrivealive](http://www.hedgehogs.gov.uk/arrivealive)



# Suggested Lesson Plan



## Aims

- ➔ To show the difference between safe and unsafe behaviour near roads.

## Learning Outcomes

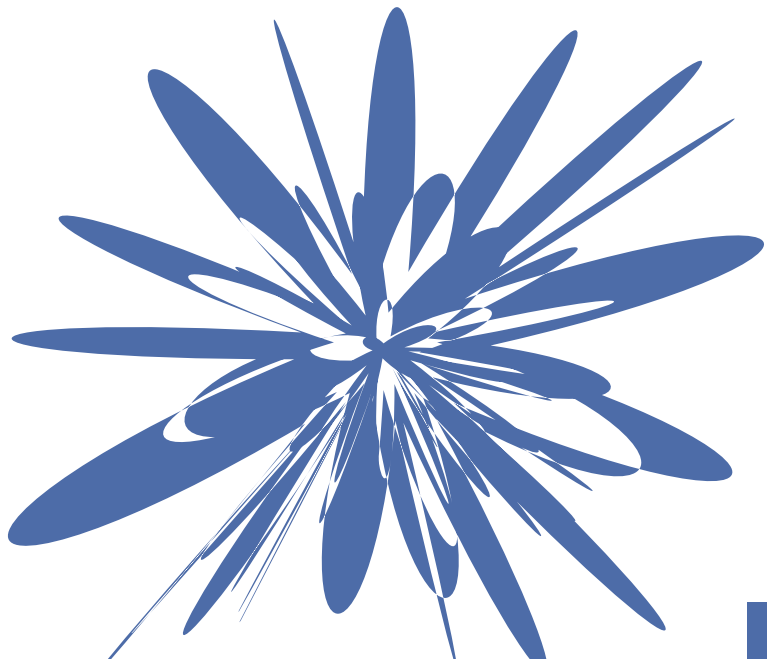
- ➔ Understand that some activities are safe on or near a road.
- ➔ Understand that some activities are unsafe on or near a road.
- ➔ Understand the reasons why these activities are safe or unsafe.

## Resources

- ➔ Sheet C5a – Safe and Unsafe Behaviour Near Roads.
- ➔ Worksheet C5b – Safe and Unsafe Behaviour Near Roads.
- ➔ Poster – ‘Safe and Unsafe Behaviour Near Roads’.
- ➔ Photo of town road.
- ➔ Photo of village road.

## Suggested Timing

- ➔ 40 minutes.





## Suggested Lesson Plan

### Suggested Development of Lesson

- ➔ Discuss the poster and photos focusing on safe and unsafe behaviour near roads.
- ➔ Distribute Sheet C5a and talk about the picture and the people in it, focusing on the safe and unsafe behaviour on and near the road.
- ➔ Distribute Worksheet C5b.
- ➔ In pairs or small groups, identify those children who are behaving in a safe way and those in an unsafe way.
- ➔ For each activity explain why it is safe or unsafe stressing potential dangers to themselves and to road users.
- ➔ Pupils should be given time to complete the worksheet in their pairs or groups.
- ➔ As a class ensure that all safe and unsafe activities have been correctly identified and the reasons why. Stress that it is not necessarily the activity that is unsafe but the combination of activity and location e.g. listening to a walkman is not in itself unsafe but to do so whilst crossing the road is unsafe.

### Assessment

- ➔ Correct completion of worksheets (see answers).

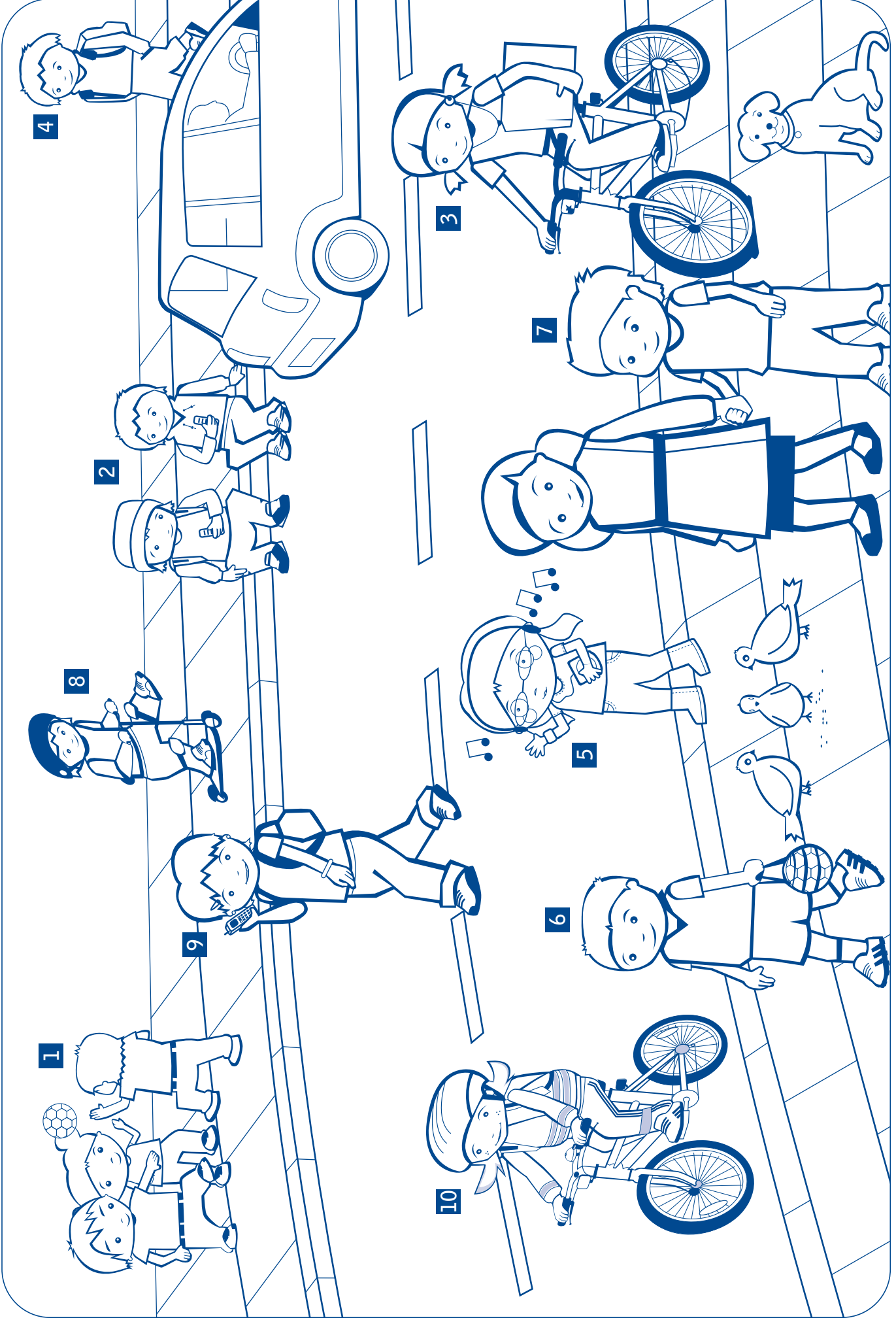
### Curricular Links

- ➔ English Language – Talking: Talking in groups.
- ➔ English Language – Listening: Listening in groups.



### Follow-up/Homework Activities

- ➔ Pupils go to the Streetwise Guys website on [www.streetwiseguys.co.uk](http://www.streetwiseguys.co.uk) Play the game 'Dog on the run'.
- ➔ Individually or in pairs create a poster or leaflet encouraging other children to find a safe place to play away from traffic. Pupils may want to use ICT for designing their poster or leaflet.



Names: \_\_\_\_\_

Date: \_\_\_\_\_

## TASK



- ➔ Look at the picture on Sheet C5a.
- ➔ On it are 10 numbered children.
- ➔ Complete the questions below for all the children.
- ➔ Tick the box to show if it is safe or unsafe and say why.

**AIM: you are going to learn about safe and unsafe behaviour near roads.**

**1** What are the children doing? \_\_\_\_\_

Where are they doing it? \_\_\_\_\_

This is  **SAFE** because: \_\_\_\_\_

**UNSAFE** \_\_\_\_\_

**2** What are the children doing? \_\_\_\_\_

Where are they doing it? \_\_\_\_\_

This is  **SAFE** because: \_\_\_\_\_

**UNSAFE** \_\_\_\_\_

**3** What is the child doing? \_\_\_\_\_

Where is she doing it? \_\_\_\_\_

This is  **SAFE** because: \_\_\_\_\_

**UNSAFE** \_\_\_\_\_

**4** What is the child doing? \_\_\_\_\_

Where is he doing it? \_\_\_\_\_

This is  **SAFE** because: \_\_\_\_\_

**UNSAFE** \_\_\_\_\_

**5** What is the child doing? \_\_\_\_\_

Where is she doing it? \_\_\_\_\_

This is  **SAFE** because: \_\_\_\_\_

**UNSAFE** \_\_\_\_\_



**REMEMBER**  
There are safe and unsafe places to play.



Names: \_\_\_\_\_

Date: \_\_\_\_\_

**6** What is the child doing? \_\_\_\_\_

Where is he doing it? \_\_\_\_\_

This is  **SAFE** because: \_\_\_\_\_

**UNSAFE** \_\_\_\_\_

**7** What is the child doing? \_\_\_\_\_

Where is he doing it? \_\_\_\_\_

This is  **SAFE** because: \_\_\_\_\_

**UNSAFE** \_\_\_\_\_

**8** What is the child doing? \_\_\_\_\_

Where is he doing it? \_\_\_\_\_

This is  **SAFE** because: \_\_\_\_\_

**UNSAFE** \_\_\_\_\_

**9** What is the child doing? \_\_\_\_\_

Where is she doing it? \_\_\_\_\_

This is  **SAFE** because: \_\_\_\_\_

**UNSAFE** \_\_\_\_\_

**10** What is the child doing? \_\_\_\_\_

Where is she doing it? \_\_\_\_\_

This is  **SAFE** because: \_\_\_\_\_

**UNSAFE** \_\_\_\_\_



**EXTRA** Design a poster to tell other children how to behave near traffic.



**REMEMBER**  
There are safe and unsafe places to play.



# Pupil Activities Answers

**AIM: you are going to learn about safe and unsafe behaviour near roads.**

- TASK**
- ➔ Look at the picture on Sheet C5a.
  - ➔ On it are 10 numbered children.
  - ➔ Complete the questions below for all the children.
  - ➔ Tick the box to show if it is safe or unsafe and say why.

**1** What are the children doing? Playing football.

Where are they doing it? On the pavement.

This is  **SAFE** because : If they lose control of the ball and it goes onto the road it may cause an accident, particularly if children run into the road to get it.  
 **UNSAFE**

**2** What are the children doing? The children are eating a snack.

Where are they doing it? On the edge of the pavement.

This is  **SAFE** because : A passing vehicle or cyclist might run over their feet or legs causing injury, or swerve and cause an accident.  
 **UNSAFE**

**3** What is the child doing? Cycling.

Where is she doing it? On the pavement.

This is  **SAFE** because : The pavement is for pedestrians and cyclists should cycle on the road. The cyclist is not wearing a helmet and the cycle is unsafe (e.g. flat tyre).  
 **UNSAFE**

**4** What is the child doing? Walking.

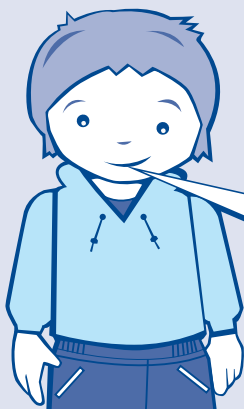
Where is he doing it? On the pavement.

This is  **SAFE** because : A pavement is the correct and safest place for a pedestrian to walk, staying away from the kerb.  
 **UNSAFE**

**5** What is the child doing? Listening to a CD player.

Where is she doing it? On the edge of the pavement.

This is  **SAFE** because : She is very close to the traffic on the road. She is also not concentrating and cannot hear what is going on, as she is listening to her CD player.  
 **UNSAFE**



**Remember there are safe and unsafe places to play**

# Pupil Activities Answers

**6** What is the child doing? Walking carrying a football.

Where is he doing it? On the pavement.

This is  **SAFE** because : *The child is walking on the pavement away from the kerb. He also has the ball safely under control in a bag.*  
 **UNSAFE**

**7** What is the child doing? Walking with an adult.

Where is he doing it? On the pavement.

This is  **SAFE** because : *The child is walking on the pavement away from the kerb, with the adult nearest the road. He is holding an adult's hand.*  
 **UNSAFE**

**8** What is the child doing? Riding a microscooter.

Where is he doing it? On the pavement.

This is  **SAFE** because : *You should ride a scooter on the pavement, as long as you are not in pedestrians' way. You should wear a helmet, knee and elbow pads.*  
 **UNSAFE**

**9** What is the child doing? Talking on a mobile phone.

Where is she doing it? Crossing the road.

This is  **SAFE** because : *She is not concentrating and might not hear approaching traffic. She could be hit by a vehicle.*  
 **UNSAFE**

**10** What is the child doing? Cycling.

Where is she doing it? On the road.

This is  **SAFE** because : *This is the correct place to cycle and she is wearing a helmet.*  
 **UNSAFE**



**Remember there are safe and unsafe places to play.**

